

NOTES:

- CAST-IN-PLACE CONCRETE:
- CAST-IN-PLACE CONCRETE FOR THIS PROJECT SHALL COMPLY WITH THE AMERICAN CONCRETE INSTITUTE (ACI) "BUILDING CODE REQUIREMENTS FOR REINFORCED CONCRETE AND COMMENTARY" ACI 318-08 AND ACI 318R-08.
 - CONCRETE SHALL HAVE THE FOLLOWING PROPERTIES:

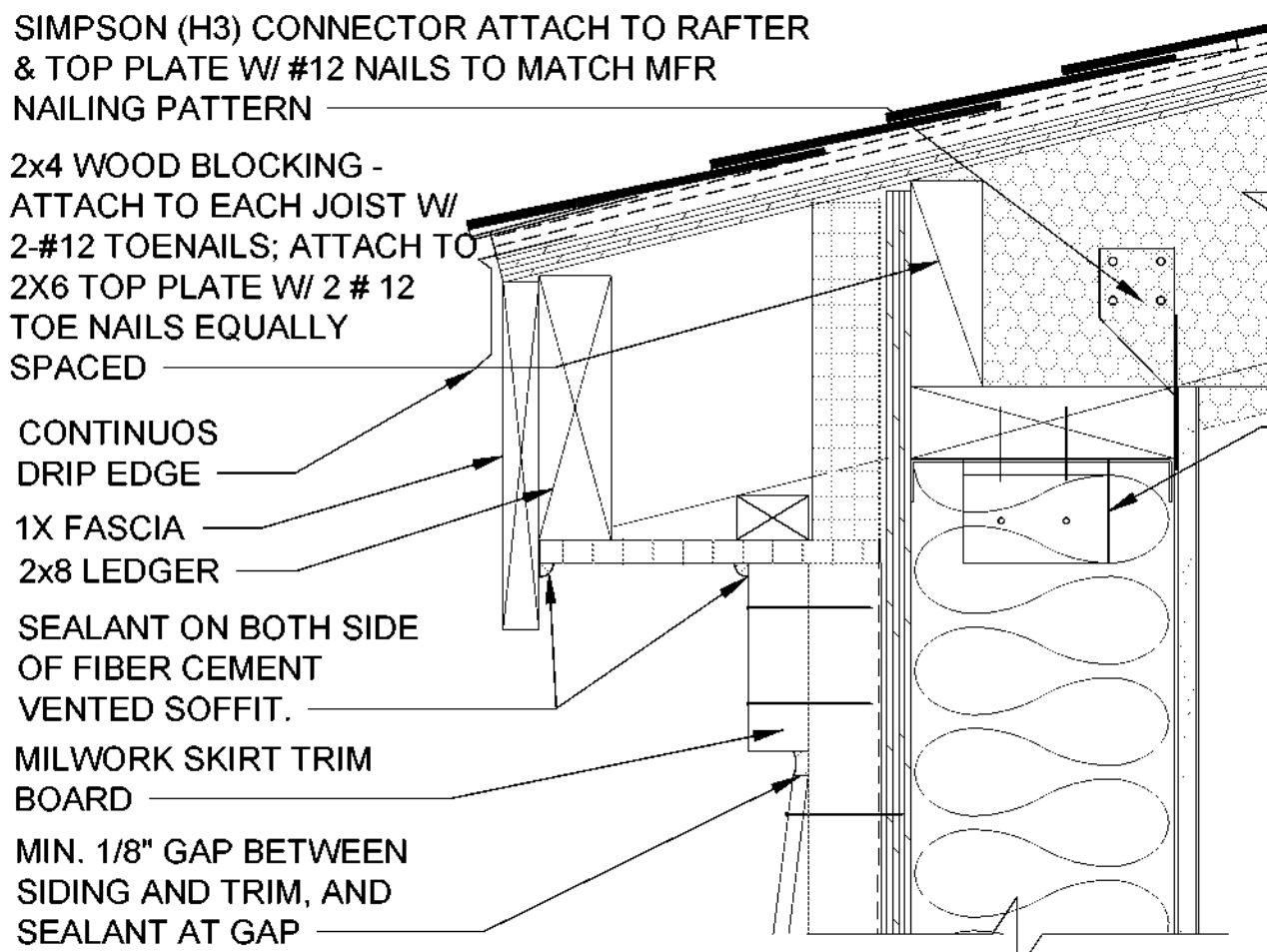
WEIGHT	STRENGTH @ 28 DAYS	AIR CONTENT	MAX. W/C RATIO
150 pcf	3000 psi	N/A	.5
 - ALL EXPOSED CONCRETE EDGES SHALL HAVE 3/4" CHAMFER, WHETHER SPECIFICALLY NOTED OR NOT.
 - TYPICAL SLAB FINISH SHALL BE BROOM FINISH FOR EXTERIOR SLABS AND INTERIOR WET SLABS AND STEEL TROWEL FINISH FOR INTERIOR DRY SLABS.
 - CONCRETE FORM WORK SHALL COMPLY WITH ACI 347, LATEST EDITION. CONTRACTOR SHALL BE RESPONSIBLE FOR THE DESIGN OF ALL FORMWORK.
 - DURING AND IMMEDIATELY AFTER PLACING, CONCRETE SHALL BE THOROUGHLY COMPACTED BY SPADING OR MECHANICAL VIBRATING TO PROVIDE DENSE CONCRETE FREE OF HONEY COMBING.
 - DIRECTLY AFTER FORMS HAVE BEEN REMOVED, ALL EXPOSED TIE WIRES AND STAPLED ENDS SHALL BE REMOVED FROM CONCRETE SURFACES TO BE EXPOSED. CUT TIES FLUSH WITH FINISHED SURFACES FOR ALL OTHER CONCRETE. RUB SMOOTH OR CUT OFF FINS AND ROUGH PLACES. REMOVE ALL LOOSE CONCRETE AND OTHER IRREGULARITIES. PATCH AND FILL VOIDS WITH BONDING AGENT AS REQUIRED.

- CONCRETE REINFORCEMENT:
- REINFORCING STEEL SHALL CONFORM TO ASTM A615 SUPPLEMENT SI, GRADE 60, OF DOMESTIC MANUFACTURER.
 - WELDED WIRE REINFORCEMENT SHALL CONFORM TO ASTM A185. WELDED WIRE REINFORCEMENT SHALL BE SUPPLIED IN FLAT SHEETS ONLY. LAP 9" MINIMUM.
 - REINFORCEMENT SHALL BE FABRICATED TO SHAPES AND DIMENSIONS SHOWN AND SHALL CONFORM TO THE REQUIREMENTS OF CRSI AND ACI 318. REINFORCEMENT SHALL BE COLD BENT UNLESS OTHERWISE AUTHORIZED. BENDING MAY BE ACCOMPLISHED IN THE FIELD OR AT THE MILL. BARS SHALL NOT BE BENT AFTER EMBEDDED IN CONCRETE.
 - REINFORCEMENT SHALL BE FREE FROM LOOSE RUST AND SCALE, DIRT, OIL, OR OTHER DELETERIOUS COATING THAT COULD REDUCE BOND WITH THE CONCRETE.
 - WHERE REQUIRED, PROVIDE DOWELS TO MATCH SIZE AND SPACING OF VERTICAL REINFORCING FROM FOUNDATION. DOWELS SHALL HAVE STANDARD 90° HOOKS.

- | | CAST-IN-PLACE CONCRETE COVER |
|---|------------------------------|
| 6. MINIMUM CONCRETE REINFORCING COVER REQUIREMENTS: | 3" |
| a. CONCRETE CAST AGAINST EARTH: | |
| b. FORMED CONCRETE EXPOSED TO EARTH OR WEATHER: | |
| WALLS, SLABS: | 2" |
| #6 BAR AND LARGER | 1 1/2" |
| #5 BAR AND SMALLER | |
| c. FORMED CONCRETE NOT EXPOSED TO WEATHER OR IN CONTACT WITH GROUND: | |
| WALLS, SLABS: | 3/4" |
| #11 BAR AND SMALLER | |
| 10. ALL REINFORCING STEEL AND EMBEDDED ITEMS SUCH AS ANCHOR RODS AND WELD PLATES SHALL BE PLACED TO PREVENT DISPLACEMENT BEYOND PERMITTED TOLERANCES. | |
| 11. DETAIL BARS IN ACCORDANCE WITH "ACI DETAILING MANUAL-2004", PUBLICATION SP-66, ACI 318, AND ACI 315, OR LATEST EDITIONS. | |
| 12. PROVIDE ACCESSORIES NECESSARY TO PROPERLY SUPPORT REINFORCING AT POSITIONS SHOWN ON PLANS. | |

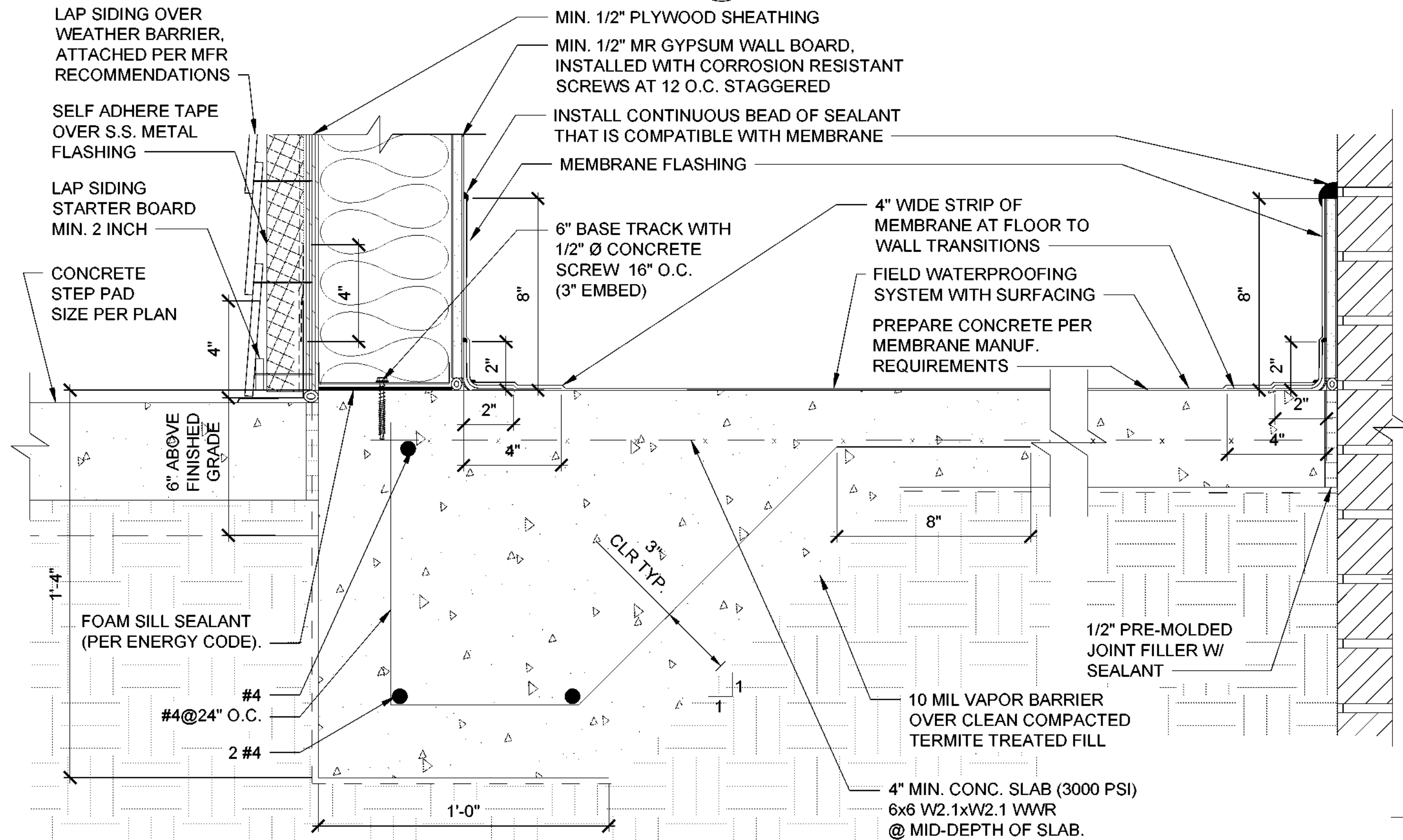
- TIMBER FRAMING:
- ALL TIMBER HAS BEEN DESIGNED ACCORDING TO THE NATIONAL DESIGN SPECIFICATION FOR WOOD STRUCTURES, 2005 EDITION WITH SUPPLEMENT.
 - SEE TYPICAL DETAIL SHEETS FOR REQUIRED SHEATHING ATTACHMENTS TO WALLS AND ROOF.
 - ALL TIMBER SHALL BE CONNECTED USING PRE-MANUFACTURED ATTACHMENTS AS SHOWN PROVIDING EQUAL OR GREATER STRENGTH THAN THE REFERENCE PRODUCT INDICATED IN THESE DRAWINGS.
 - TIMBER SHALL BE SOUTHERN YELLOW PINE NO. 2 GRADE OR BETTER. REFERENCE SPECIFICATION SECTION 061000 FOR ADDITIONAL REQUIREMENTS.
 - SHEATHING THICKNESS REQUIRED:
WALL SHEATHING: 1/2" PLYWOOD
ROOF SHEATHING: 3/4" PLYWOOD

1 DOOR THRESHOLD DETAIL
A-501 SCALE: 3" = 1'-0"



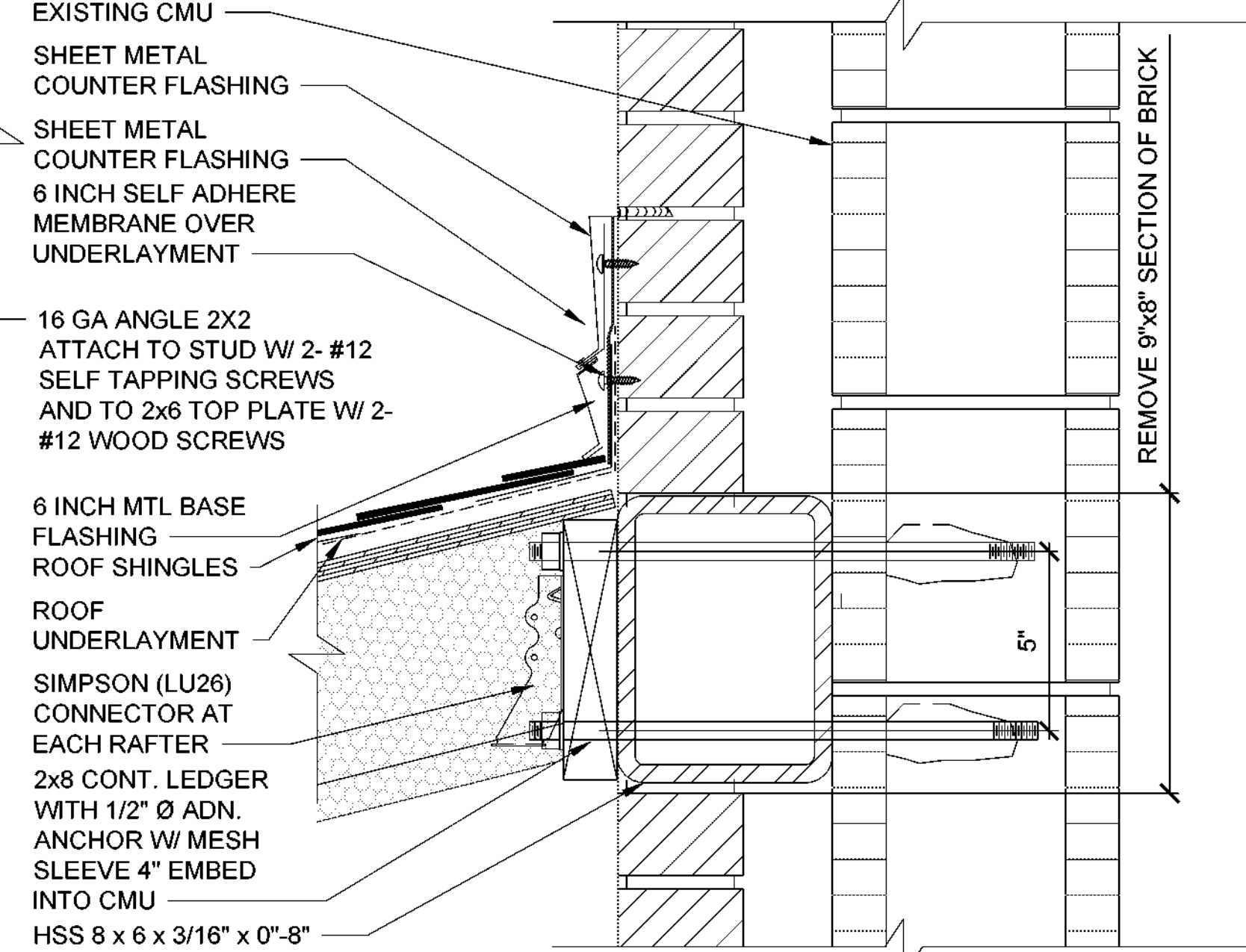
DETAIL NOTE:
Apply a minimum 19-inch-wide strip of underlayment felt parallel with and starting at eaves, fastened sufficiently to hold in place. Starting at the eave, apply 36-inch-wide sheets of underlayment overlapping successive sheets inches and fasten sufficiently to hold in place. Distortions in the underlayment shall not interfere with the ability of the shingles to seal.

5 ROOF OVERHANG DETAIL
A-501 SCALE: 3" = 1'-0"



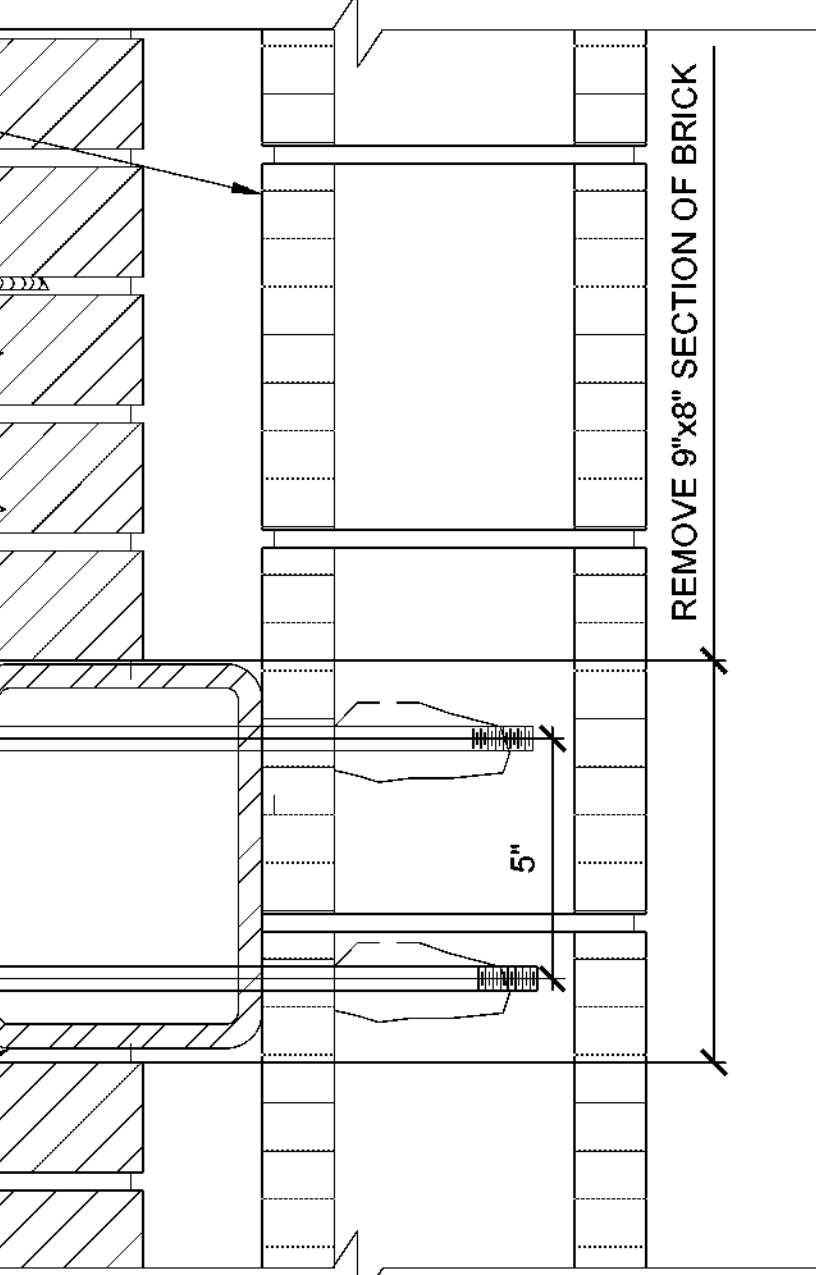
8 BASE WALL THICKENED EDGE SLAB DETAIL
A-501 SCALE: 3" = 1'-0"

2 DOOR HEAD DETAIL
A-501 SCALE: 3" = 1'-0"

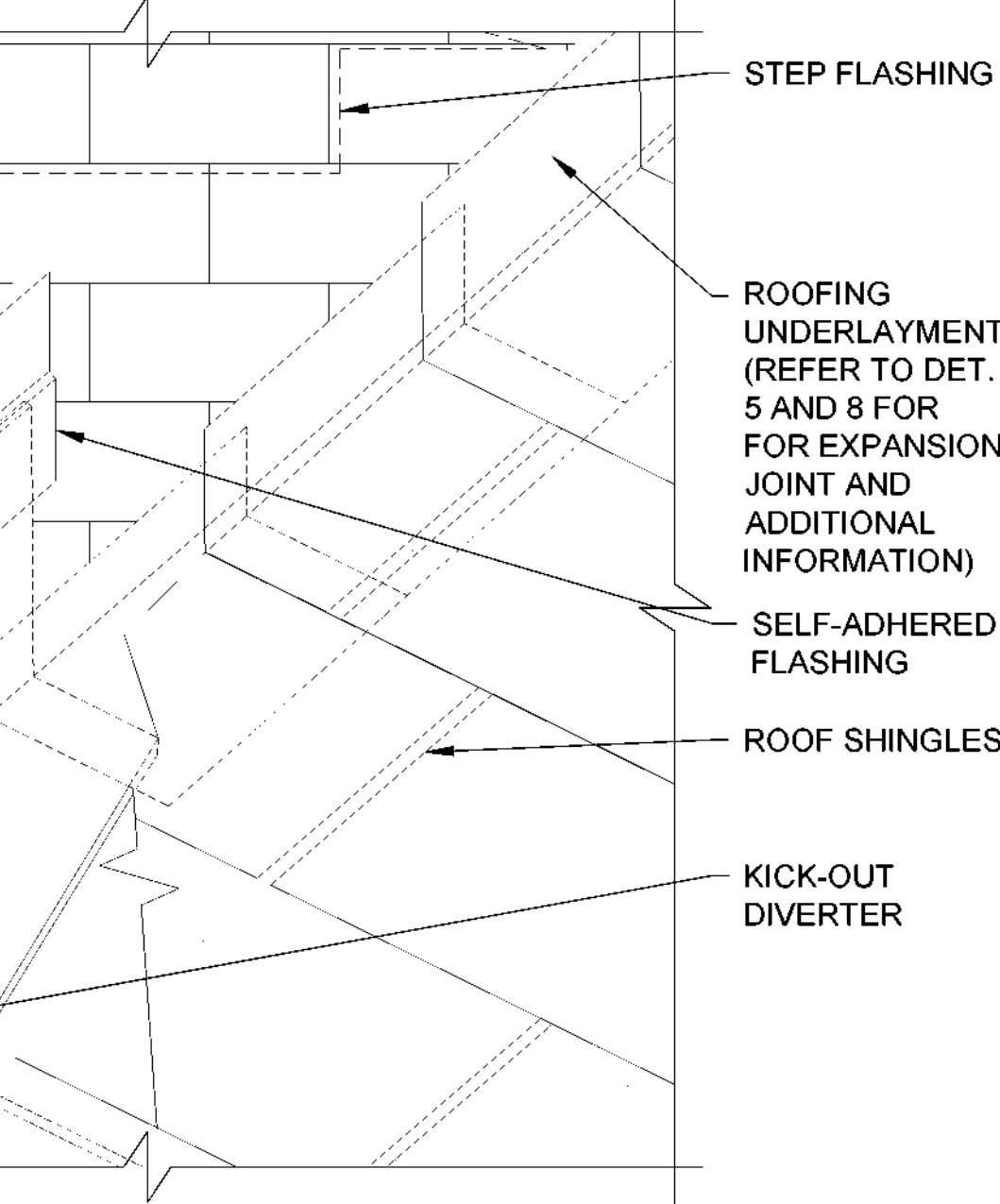


6 ROOF SECTION DETAIL
A-501 SCALE: 3" = 1'-0"

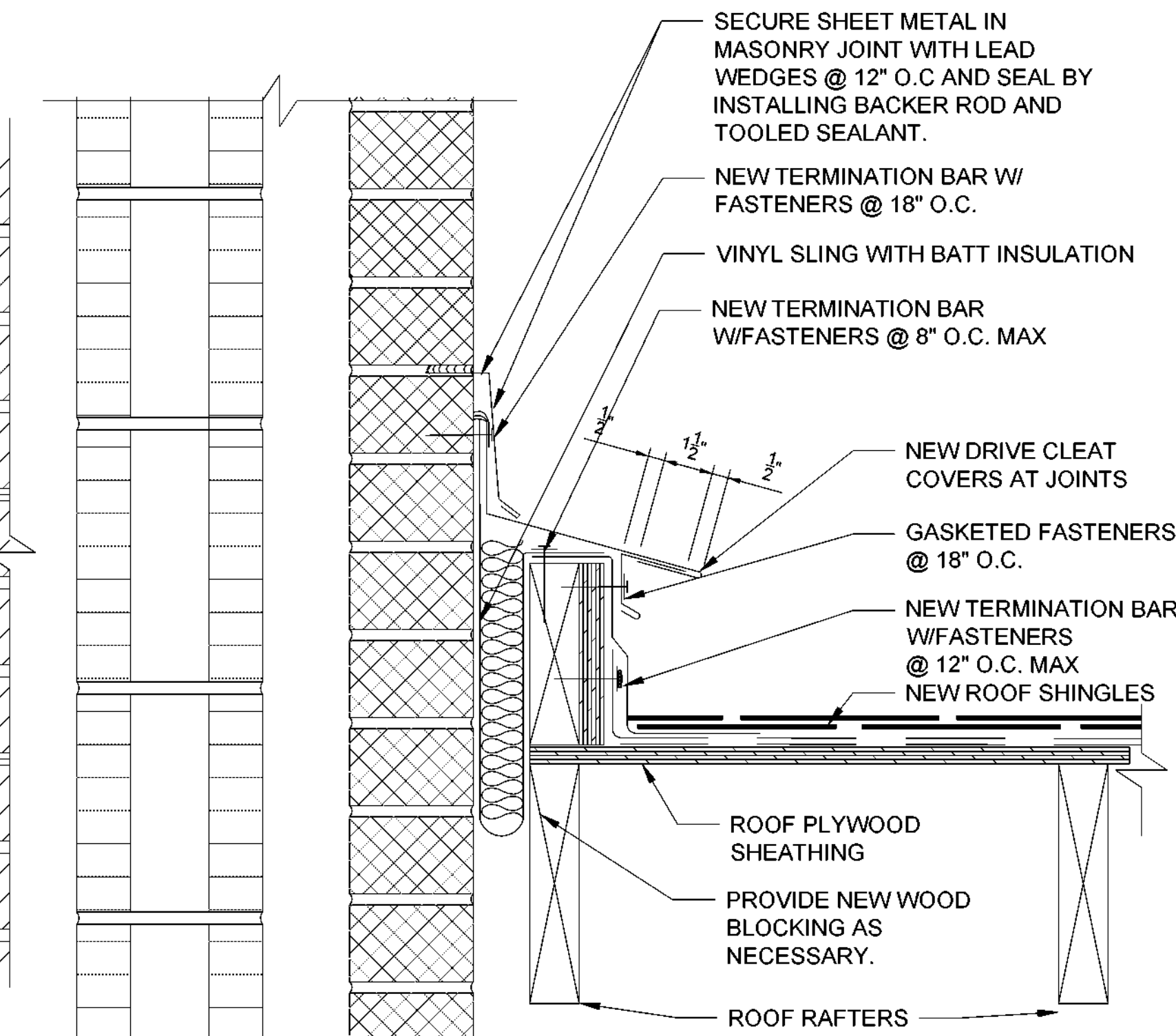
3 DOOR JAMB DETAIL
A-501 SCALE: 3" = 1'-0"



4 ADJOINING WALL DETAIL
A-501 SCALE: 3" = 1'-0"



7 KICK-OUT DIVERTER DETAIL
A-501 SCALE: 3" = 1'-0"



9 WALL EXPANSION JOINT FLASHING
A-501 SCALE: 3" = 1'-0"

REVISIONS	DATE	BY	CHKD
SCO - 100% REVIEW	9/24		

RAYMOND
ENGINEERS, PA
310 WEST HILLBROOK ROAD, SUITE 201
RALEIGH, NORTH CAROLINA 27604
OFFICE: (919) 872-7868
FAX: (919) 872-7869
WWW.RAYMONDGLOBAL.COM
LICENSE #53143 CO#4 C4282

PREPARED FOR:
NC DEPARTMENT OF INSTRUCTION
SCO # 24-27792-01A
RALEIGH, NC

GOVERNOR MOREHEAD SCHOOL
SPRINKLER, ADA TOILET, LIGHTING
UPGRADES FOR FORMS A, B, & D
RALEIGH, NC

CONTENTS:
NEW RISER ROOM
DETAILS

DATE: 05/27/2025
FOR CONSTRUCTION
DESIGNER:
ENGINEER:

SHEET NO.

A-501

OF